

Mapping Human Migration and Meningitis in Niger

T. Timberlake¹, S. Adamo², S. Trzaska³

¹ Columbia College. ² Center for International Earth Science Information Network. ³ International Research Institute for Climate and Society.

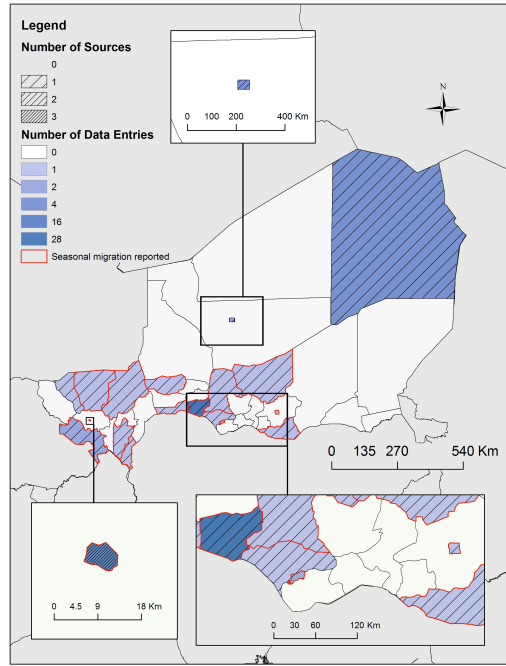


Figure 1. Bibliographic database's coverage of migration by district in Niger

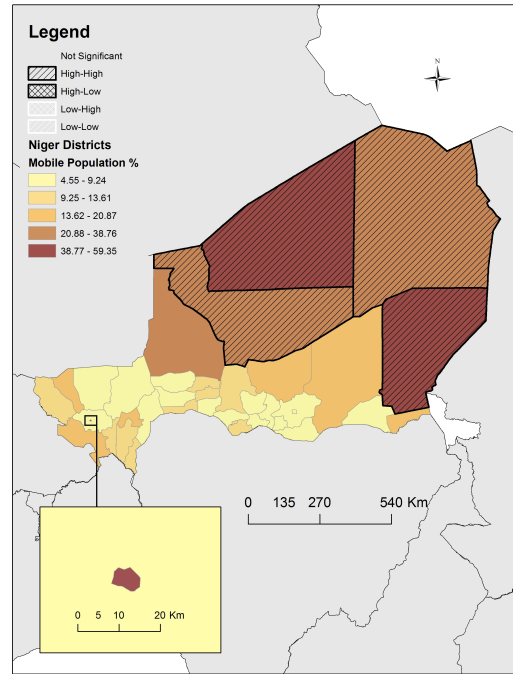


Figure 2. Mobile population percentage by district with LISA

Moran's I: 0.314302 (p-value: 0.000524)

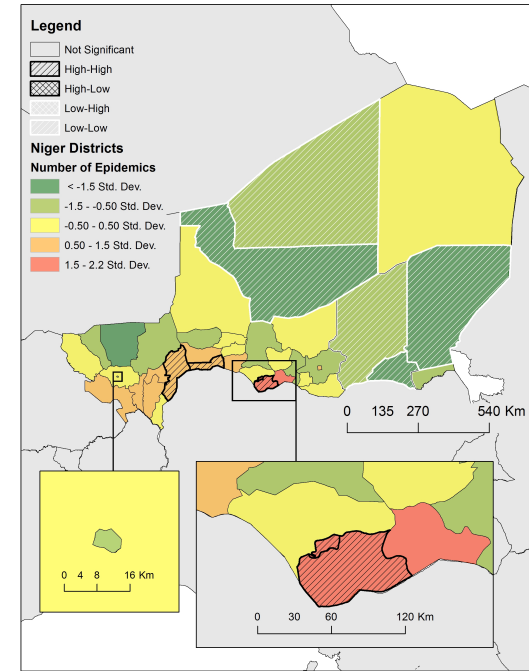


Figure 3. Number of epidemics (standard deviation from the mean) with LISA

Moran's I: 0.3965 (p-value: 0.000044)